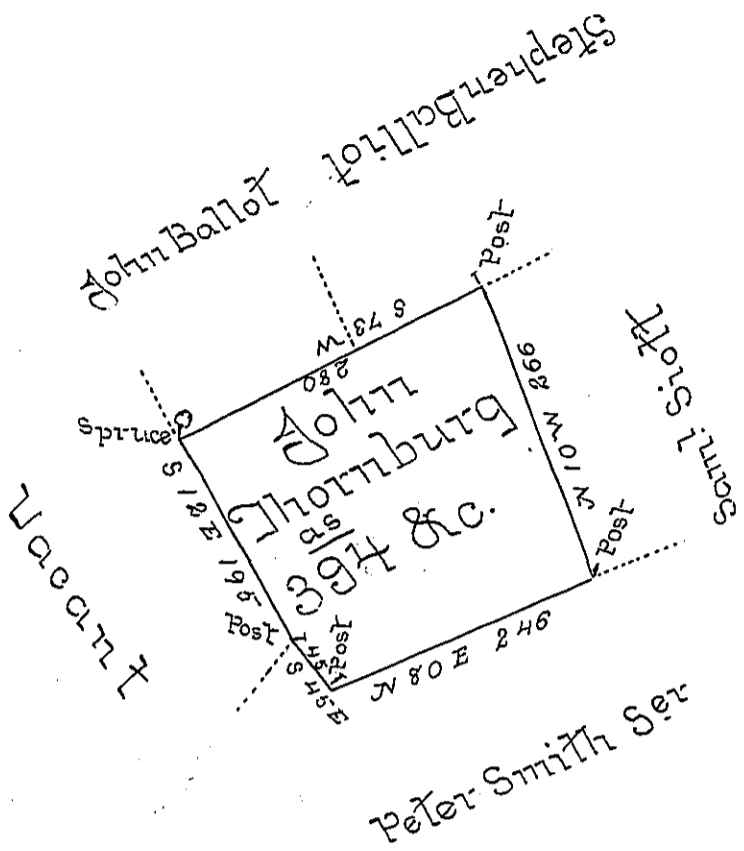


Hazle
Luzerne



Draft of a tract of land Called _____ Situate Near Land
 Surveyed for James Steedman in the County of Luzerne
 Containing Three Hundred and Ninety four Acres &
 Allow^e Surveyed for John Thornburg the 3^d day of
 October 1793 by Virtue of a Warrant dated the 13th day of
 June 17⁹³ [obl.]

by Wm Gray D.S.

[obl] Daniel Brodhead Esq^r }
 Survr Gen^l }

IN TESTIMONY that the above is a copy of the original remaining on file in the
 Department of Internal Affairs of Pennsylvania, made con-
 formably to an Act of Assembly approved the 16th day of
 February, 1833, I have hereunto set my Hand and caused
 the Seal of said Department to be affixed at Harrisburg, this
 second day of March 1897.

James W. Latta
 Secretary of Internal Affairs.